

LAKERLOG

LAKE SUPERIOR STATE UNIVERSITY

Spring 2010



LAKERLOG

LAKE SUPERIOR STATE UNIVERSITY

In this Issue

From the president	1
Teaching program expands	2
Turning grass into fuel	6
Norris Center expansion	9
Remembering Kennedy	10-11
Bud Cooper remembered	13-15
New Foundation director	18
Golf is back	19
Dowd, Weight in HOF	22-23
Messages in a bottle	27

Editors

Bill Eilola
Tom Pink

Writers

Linda Bouvet
Susan Fitzpatrick
Tom Pink
John Shibley

Graphics

Deb Cook

Photographers

John Shibley
Jeremy Beasley
Sean O'mara
Shelley Peterman

ON THE COVER – Jenny Peterman, LSSU alumna and former LSSU Director of Purchasing, applies the heat to “Burnie” the Snowman during LSSU’s 39th annual Snowman Burning on March 20, 2009. Wielding the torch was one of Peterman’s last official acts before she retired from the Purchasing Office. LSSU’s 40th annual Snowman Burning is Friday, March 19.

PUBLICATIONS MAIL AGREEMENT NO. 41894013
RETURN UNDELIVERABLE CANADIAN
ADDRESSES TO: PO BOX 875, STN A, WINDSOR
ON N9A 6P2



JUDGING GOOD JOE— LSSU students Sara McGavin, left, and Molly Huber sample contender beans for a custom coffee called Laker Blend. LSSU’s food service offered a smell-and-taste test during the fall semester to evaluate 20 types of coffees from six national coffee roasters. Storm Mountain Coffee of Steamboat Springs, Colo., won the honor to craft LSSU’s namesake blend, which was unveiled in October. The company’s founder is LSSU alumna Julie Spitzley ‘96. Laker Blend is now served at all campus eateries and sold in bags through LSSU’s Galley, Norris Center and, eventually, on-line.



ROLE REVERSAL – LSSU Biology Prof. Dennis Merkel jokingly said it was an unusual role reversal when he ended up carrying colleague Geoff Steinhart (on cover of Log) through the Rocky Mountains over Christmas break. Merkel brought the Log (but not Steinhart) along during a three-day backpacking trip in the Mt. Evens Wilderness just west of Denver with son Woodrow, who took this shot.

From the President

Greetings from Sault Ste. Marie, where we came through a winter that left us with much less snow than we usually get. By the time you get this issue of the Laker Log, we'll have celebrated the 40th annual snowman burning on March 19.

On campus we're also on the downhill side of the 2009-2010 school year and this has been a year that has brought us many highs and lows. As you will read in this issue, we lost our number one booster and friend with the death of Bud Cooper. I've known Bud since I arrived in the Sault in 1995 but I never knew what he meant to this campus until this past year. It was a privilege to work with him for that short time. His dry wit and strong support will be missed.

We've also had to deal with the continuing budget problems that come with the overall decline of Michigan's economy. Despite the gloomy state outlook, I think we have made the adjustments necessary to ensure the University has a sound financial future. We intend to strengthen the core programs on campus and initiate expansion in our regional centers, including the possibility of a regional center in Dearborn. The planning for our new Aquatic Research Lab is moving forward and we have several new programs that will be unveiled in the next few months.

We have much to celebrate, including:

- * Engineering's Prototype Development Center, which is gaining more attention from businesses and entrepreneurs while providing more real-world experience for our students;

- * A new effort to provide customized training for companies that have needs for it, such as the recent program put together for employees in management at Essar Steel Algoma, in Sault, Ont.;

- * An increased number of applications received and students accepted over last year at this time;

- * Two new degree programs in the communication area, including a bachelor of arts in literature-creative writing and a minor in creative writing, following programs recently added in geographic information science, conservation, conservation leadership, electrical engineering technology, fish health and special education/learning disabilities;

- * A report that shows our students from the School of Business scoring well above the national average on the Major Field Test in Business given by the Educational Testing Service at more than 600 business schools across the country. Our students scored in the top 5 percent in accounting and economics and in the top 10-30 percent in several other fields.

If you've been following our athletic teams, you already know the men's and women's basketball teams and the hockey team all performed at a level well beyond early season predictions. More impor-



Tony McLain

tant, they did it in true Laker fashion -- with gritty play and hard work. Our coaches start with true student athletes and develop them into very competitive teams. Now it's time for track and field, softball and tennis.

As we look to next year, the state's final position on our appropriation will still provide us with many trials but we don't intend to let the state's problems keep us from moving forward. We're going to use the model of our athletic teams -- hard work, grit and a team approach.

Go Lakers!

Tony P. McLain

Teaching program finds new home, plans for growth

LSSU's School of Education has made some changes in recent months, both in the delivery of the program itself and in its facilities.

During the fall semester, the program moved into its new digs in Brown Hall, which formerly held LSSU counseling services, and later music classes, on the east end of campus. Barbara Searight Ph.D. was hired as associate dean of education and spearheaded the move to the new office space which, among other benefits, brought all of the LSSU Education faculty and staff into one area. The new headquarters offers more room for study space for education students and Searight said the school is pursuing grant funding for a computer lab.

Searight said the program faculty and staff are already taking steps to refine and improve the teacher education program, which was given lower than desirable marks recently from the Michigan Dept. of Education. Some of the steps taken are simply to make sure the state understands that the LSSU program is educating prospective US and Canadian teachers, both of which are held to different standards in their respective countries.

For instance, Canadian students are not required to take qualifying tests offered in the minor areas they've studied, so they typically do not take those tests. As a result, they cannot be counted towards the completion rate of students entering the fields of math or science when it comes to Michigan board standards. That lowers LSSU's program score.

Many of the directions the program is taking now were started by former program director David Myton Ph.D. and his staff before Searight took over.

"Some changes have already been in place by Dr. Myton and his staff for the last year or two, but the scores we received this year from the state are from data gathered three years ago," Searight said. "Even if we scored 100% last year, the data is not reflective until three years down the road. Because of that, it may take another year for us to score higher."

LSSU Provost Anthony Blose Ph.D. said he is optimistic that the School of Education is continuing

down the right path.

"We are in the process of making some improvements in a few areas that required some attention, and we are optimistic that we will raise our standing by virtue of the changes we have made and will continue to make," he said.

Meanwhile, scores for LSSU students taking the Michigan Test for Teacher Certification (MTTC) came in at 88 in 2009, which Searight says is not a bad score. The LSSU crew is working to improve it by having students work with tutors to prepare them for the test.

"We feel they need to refresh themselves with the material and review it before testing as there are a lot of details to pull together at the last minute," Searight said. "If students don't pass their test, they lose confidence. That's the last thing they do on their way to get certified and you want them to be confident going into it."

"We think teaching is an honorable profession and we want the best students," Searight said. "Teachers make a difference in everyone's life. That's the kind of program we want to have – to graduate the best teachers who can make those differences."

Meanwhile, Searight said she is exploring the possibility of offering some of the school's master's classes at LSSU's new Gaylord Regional Center, maybe as early as this summer. She's also looking at offering the early childhood education bachelor's degree in Gaylord, as well as CEU training there for area teachers. In addition, Searight said the school is examining the logistics of converting its master's degree to a web-based program that could be offered to teachers at LSSU-sponsored charter schools and, maybe, beyond.

As all this goes on, LSSU student teachers continue to be well received at the schools where they are doing their internships or student teaching, and in the schools where they eventu-

ally find jobs. Four of nine teachers hired at Sault Area High School for the 2009-2010 school year were LSSU grads.

James Kerfoot, LSSU School of Education Field Placement Director, is in charge of supporting LSSU student teachers in their field placements. He works with supervisory teachers who are under contract with LSSU to observe, assist and advise LSSU students at the schools where

they're teaching. Kerfoot said he often hears from teachers, supervisors, superintendents and others who say they truly enjoy working with our students, who are working in many places.

"We've placed them all over Michigan and Ontario," Kerfoot said. "Last semester, 17 of 28 students were placed in Canada. Once we had someone placed in Hawaii. Her husband was stationed there

in the (armed) service. She went to East Jordan for her first semester and then her second semester in Hawaii, where she was hired."

These days, LSSU students work one semester as a student teacher.

"I think we'll find completion rate better with the one-semester placement," Kerfoot said. "They don't have to put in another full year after they graduate, and since there is no pay for student teaching this gives them the opportunity to go home and saves some expenses."

Searight says LSSU students do well because they receive good preparation.

"We have a great quality staff here. Our students won't find a more caring staff that's intent on making this a good program. We're all very committed to doing what's best for the students and the program."

Watch the LSSU website for more information on the LSSU Education program, or contact Searight at bsearight@lssu.edu or 635-2811. The department's website is www.lssu.edu/education/.



Barbara Searight Ph.D



LAKER GOES LAKERS—The Great Lakes freighter Manitowoc locks up the St. Mary's River on Sept. 4 with the blue and gold standard of Lake Superior State University gracing her foremast. LSSU alumnus James Bearman's nephew and ship's master, Capt. Pat Hart of Rogers City, Mich., struck up the LSSU colors for the first time on a lake boat. Bearman is a 1977 graduate of LSSU and serves on the LSSU Foundation board of directors.

Presidential search narrows field of candidates

The search for a new president at LSSU took advantage of Internet communications in January, interviewing eight potential candidates over a Skype-based network.

The committee had narrowed the field from an impressive 80 candidates to a smaller number and prior to the holiday break had narrowed the field to nine. Recently, the committee conducted interviews with candidates spread across the country, basing the interviews on the LSSU campus. Following the interview process, the committee has whittled the candidate pool to five.

"The search has fortunately drawn a lot of interest. We have serious candidates from all over the country," said Patrick Egan, member of the LSSU Board of Trustees and chair of the search committee. "The entire committee was involved in the interviews.

It is a good process, able to bring candidate and committee together for a personal conversation and exchange."

The next part of the process is to exchange more information with the remaining five and begin more personal and complete discussions with each of them.

"The committee has done a lot of work," Egan added. "Everyone has taken the responsibility very seriously and we've made some tough decisions already. We are hopeful and encouraged by the quality of the candidates that have come forward and are interested in this position. They realize the potential of LSSU and have strong experience."

Current LSSU President Tony McLain is part of the group being considered. He will be going through the same process as part of the cohort of candidates.

Over the past few weeks, the committee worked with the LSSU community to create information for the candidates and begin a more intense familiarization process. The committee hopes to have potential candidates ready to meet the LSSU trustees and community later this spring.

Chaired by Egan, the committee includes fellow trustee Scot Lindemann; Jim Bourque, LSSU Foundation; Collette Coullard and Barbara Keller, LSSU faculty; Jeff Harris, LSSU Steelworkers; Nancy Neve and Ken Peress, LSSU administrative/professional staff; Mickey Parish, Bay Mills Community College President; Kahler Schuemann, LSSU alumnus and Karizma Vance, LSSU student.

For more information about the LSSU presidential search, visit www.lssu.edu/presidentsearch.

Board encouraged by enrollment, legislative reports

LSSU's Board of Trustees heard a number of good reports during its meeting on campus earlier in the semester. Increased numbers of students applying for admission and a legislative endeavor to avoid cuts to higher education in the next fiscal year were both highlights of the meeting.

State Rep. Gary McDowell, D-Rudyard, read a letter from Rep. Joan Bauer, chair of the House Higher Education Appropriations Committee, who said she intends to push to make sure higher education in Michigan suffers little to no more budget cuts in the next fiscal year. While McDowell acknowledged that flat funding for higher education is not the most welcome news, it beats the alternative of a funding cut which some have said could be as high as 20 percent next year.

McDowell said Bauer, who visited LSSU two years ago during a House Higher Education Committee hearing, was impressed with the university's staff and students when she was on campus.

"She left Sault Ste. Marie as a strong advocate of this university," he said.

In her letter, Bauer wrote, "It's obvious to me that Lake Superior State University fulfills an important part in Michigan's higher education system."

In another address to the board, Barry Hawthorne, executive director of Advanced Technology Academy, an LSSU charter school in Dearborn, read a letter from Dearborn Mayor John B. O'Reilly Jr., who applauded efforts by ATA and LSSU on the concept of establishing an LSSU regional center on the ATA campus. Hawthorne said articulation agreements are being sought between LSSU, ATA and Henry Ford Community College and LSSU's presence on the campus would be part of ATA's proposed Dearborn University Consortium Center. If approved, it would include partnerships with Ford Motor Company and others.

In a periodic report on enrollment, LSSU Vice President for Enrollment Services Bill Eilola told the board that the university has seen improvement in the number of



IN TRIBUTE – The Board of Trustees paid tribute to Chuck Schmidt '75 at its January meeting in recognition of his eight years on the board. Board Chair W.W. "Frenchie" LaJoie, Sault Ste. Marie, congratulates Schmidt (r), of Rochester Hills. LSSU has two board positions waiting to be filled by Gov. Jennifer Granholm. Both Schmidt's term and that of Trustee Barbara Cliff having expired in January.

freshmen and transfer student applications and admissions since last fall, when there was some concern over the numbers.

"Right now, we're up in all categories," Eilola said. "We have more than 120 more applications than we had at this time last year, and more than 100 more accepted students."

During his Academic Affairs report, LSSU Provost Tony Blose introduced Kay Floyd, who has been contracted to prepare the university's "self-study," a requirement for reaccreditation by the Higher Learning Commission. A team of HLC members will visit LSSU this fall to inspect it as part of the reaccreditation process.

Blose's academic report included approval of two new degree programs, a bachelor of arts in literature-creative writing and a minor in creative writing, as well as revisions of existing English language and literature programs that include bachelor of arts degrees for prospective teachers in that field.

"None of these proposals will entail a change in faculty or new resources; it's just a new packaging of existing courses to broaden the field of our offerings to students," Blose said.

LSSU Foundation Director Tom Coates, in his report to the board, said the Foundation continues to work with the LSSU Aquatic Research Laboratory in coming up with firm costs on its proposed expansion project and said contributions to the university have increased by 9 percent over last year in the LSSU Foundation's annual "phonathon."

In other action, the board heard a financial update from LSSU Finance Vice President Sherry Brooks, who said that while showing a small surplus on its books right now, the university needs to continue to be conservative in its spending and may need to consider additional cuts in staffing in the coming year.

The board paid tribute to eight-year member Chuck Schmidt whose term expired in January. President McLain expressed his hope that Schmidt might be reappointed to another term and said he had sent a letter to the governor requesting consideration of such. The governor's office will also be appointing a replacement for Trustee Barbara Cliff, who resigned from the board last spring to take a job out of state.

Study in China

LSSU is offering a faculty-led study abroad program at Beijing University of Technology, May 10-June 16, which includes a 17-day tour from May 31-June 16 of historic and scenic attractions in five popular tourist destinations, including Beijing, Xi'an, Shanghai, Suzhou, and Hangzhou.

Deadline for applications and a deposit of \$1,600, for both the academic and the tourist trips was March 8, but you can still participate if you register now. Full payment is due April 23.

For more information
Contact LSSU Professor
Guidi Yang at
gyang@lssu.edu
or 906-635-2181.
You may also contact
Prof. Tom Schirer
at tschirer@lssu.edu
or 635-2593.

LSSU ready to begin new customer relationship management program

LSSU is working with software and services firm Azorus Inc. to expand its student recruitment efforts.

Azorus, based in Halifax, Nova Scotia, is assisting LSSU on a customer relationship management (CRM) plan that is designed to enhance its relationship with prospective students by tracking, managing and delivering personalized communications from the students' initial point of contact through the day they enroll in classes. Azorus, with clients throughout North America, works exclusively with the higher education market and provides the latest in personalized web-based service.

LSSU chose Azorus because of its flexibility, user-friendly interface, and knowledgeable customer-focused professional services team.

"Our relationship with Azorus is a partnership in that our success is their success. They're committed to helping LSSU meet its strategic enrollment management goals," said Bill Eilola, LSSU Vice President of Enrollment Services.



Through the Azorus platform, the university will be able to execute sophisticated marketing campaigns with targeted messages.

"In an environment that is growing more competitive, schools like LSSU must provide higher levels of service to increasingly discerning and tech-savvy students," said Azorus CEO Stephen MacDonald. "Azorus' communication and analytics functionality will allow LSSU to monitor and manage their strategy, ensuring they're reaching their enrollment goals. We are truly delighted to be able to be a partner with LSSU. The staff has ambitious goals for the institution."

More information on Azorus is available at Azorus.com.



BRIGHT LIGHTS, BIG CITY — LSSU students performed at the 95th annual National Communication Association conference in Chicago, accompanied by their advisor Gary Balfantz Ph.D., dean of the LSSU College of Arts, Letters and Social Sciences. The students, who were actors from the LSSU production of "Running for the Storm Cellar," an adaptation from Julie Williams' book of poems "Escaping Tornado Season," took their performance to the Chicago conference and presented it not only in front of those attending the conference, but also the author's daughter. Also during the conference, Balfantz received the NCA's Distinguished Service Award from the NCA's Performance Studies Division. The award comes in part for his development of LSSU's Superior Festival, a performance event and colloquium that just celebrated its ninth season. It also recognized Balfantz for his work in organizing other festivals, serving on the National Performance Review Board, his work as an associate editor for "Text and Performance Quarterly," and for service on several national committees over the past 20 years. The photo shows LSSU students standing in front of a downtown Chicago theater, where the group saw the musical "Young Frankenstein" Left-to-right are Wayne Thompson, Sault, Ont., Gabby Castillo, Mt. Pleasant; Kadie Brinks, Cheboygan and Trevor Lanuzza, East Lansing.

Biology professor, student turn grass into fuel

By Toni Boger, LSSU PR Intern

Already a place known for research in various fields of study, LSSU is the site of a new research project for alternative fuel sources.

The multi-phase project, led by LSSU biology professor Gregory Zimmerman Ph.D. with help from Justin Wilson, the project's student volunteer, is studying the potential of reed canary grass pellets as an environmentally friendly and economical heating fuel, as well as a possible economic stimulant for the Eastern Upper Peninsula.

The grass being used is known as reed canary grass, an abundant but weedy species in the EUP considered by many to be a problem due to its aggressive growth. The first phase of the study wanted to prove the grass's practicality as a pellet fuel. The recently completed second phase demonstrated how the grass could be made into small pellets as fuel for heating spaces such as a house. Both phases have shown the grass pellets to have several potential benefits.

"Reed canary grass is a sustainable source of heating fuel, does not compete with food production and, compared to the use of fossil fuels, reduces the release of greenhouse gases," said Zimmerman, who added that he hopes the rest of the study will confirm the grass pellets' numerous advantages over current fuels such as propane.

To make the grass into pellets, Zimmerman harvested reed canary grass from a local field last November. He chose this time period so that the grass was dead, allowing nutrients to move back to the soil and requiring no further energy for drying. The collected grass was then ground into quarter-inch particles in a hammer mill.

The grass, along with various additives, was then sent through a small pellet mill driven by the power take-off drive of a tractor. After the grass was turned into pellets, the pellets were used in a multi-fuel stove. The result appears to be an effective and environmentally friendly source of heat.

Zimmerman and Wilson tried a variety of recipes to discover which additives would give reed canary grass pellets characteristics similar to those of wood pellets. After multiple trials, the two recipes that produced the best results were not what one might expect. One recipe mixed reed canary grass with spent brewer's grain, which was grain used during the beer-making process at Tahquamenon Brewery. Another recipe called for the grass to be mixed with a small amount of fryer grease from LSSU's Quarterdeck cafeteria and corrugated cardboard. Although time-consuming and difficult at points, Zimmerman said the recipe experimentation was essential to the success of making these pellets.



REED FUEL READY- LSSU student Justin Wilson holds a handful of pelletized reed canary grass that is ready to burn in the stove shown in the background. Wilson, a major in environmental sciences from Sault Ste. Marie, Mich., with dual minors in biology and art, is working with LSSU Biology Professor Greg Zimmerman on a process that turns a scrub grass found throughout North America into a potent, low-residue fuel that may be ideal for home heating.

Zimmerman also acknowledges the generosity of the staff at LSSU's physical plant as a reason for the study's accomplishments. He and Wilson have housed the project and make pellets in a garage behind the university's physical plant. The staff of the plant has allowed Zimmerman and Wilson access to the garage during the course of the project in addition to providing other logistical help.

The Biomass Energy Program of the Michigan Department of Energy, Labor, and Economic Growth funded the first two phases of the study. While preparing for the third phase, Zimmerman found one major economic advantage based on results from the first two phases.

"Based on an average of six fields in the EUP, three acres of reed canary grass would make enough pellets to replace 800 gallons of propane."

He said that he hopes the next phase will show that grass pellets are competitive with wood pellets while confirming the cost of making and using the pellets to be much less expensive than propane.

The ideal situation of study for this phase would involve a co-op of area farmers sharing the cost of a "pelletizer" and the effort taken to market the reed canary grass pellets to area residents and businesses. He said he believes that keeping the co-op local could reduce transportation costs to ship the pellets and could also reduce the cost of heating for farmers, businesses, and residents.

Last summer, Zimmerman and Wilson were busy demonstrating how well reed canary grass pellets work to various community organizations. LSSU's Board of Trustees, local conservation groups, and visitors to the Sault Ste. Marie Farmers' Market are just some of the area residents who have seen how these pellets work in a multi-fuel stove.

Plans for Zimmerman and Wilson include continuing their demonstrations to residents throughout the area. They also repeated the pellet-making process in the fall.

For the 35th year, List of *Banished Words* captures international attention



LSSU staffer Ron Raffaele has been providing a “banish cartoon” for several years.

LSSU issued its 35th annual List of Words Banished from the Queen’s English for Mis-use, Over-use and General Uselessness on Dec. 31 and found that the list continues to attract attention from word-watchers around the world.

The tradition was started in 1976 by former LSSU PR Director Bill Rabe and friends and three decades later continues to be as popular as it ever was, with hundreds of nominations coming into the PR office throughout the year. While Rabe used to sift through piles of letters and postcards, these days the nominations come through the university’s website, lssu.edu/banished.

The list makes just about every North American daily newspaper on New Year’s Eve or New Year’s Day and is talked about on hundreds of radio and television shows. This year, it was once again one of Yahoo’s top news stories on Dec. 31 and was one of the site’s “most-e-mailed” stories through the week of Jan. 4-8. Mention of the list was included on other websites, too, including CNN and TIME.com. Radio talk show hosts from here to Australia love the list and if they aren’t talking about it themselves on the air, they often invite LSSU PR staff to discuss it, and the university in general, with listeners who call in during the shows. It also captured the attention of the Associated Press, Reuters and the Westwood One network.

This year’s list included a number of words and phrases dealing with the economy, including “shovel-ready,” “in these economic times,” “stimulus,” “toxic assets,” and “too big to fail,” as well as “tweet,” “sexting,” and “bromance.” To see the complete list, or to submit your nomination for the 2011 list, visit lssu.edu/banished. Take a look at the alphabetized list from the links on the left side of the page and see if the word or phrase you love to hate has already been included on lists compiled since 1976.



A TRUCK AQUATIC—Andy Haapala, left, general manager of Soo Motors, hands a 2004 Mercury Mountaineer over to Geoff Steinhart, co-director of LSSU’s Aquatic Research Lab (ARL). The LSSU Foundation brokered a hybrid gift-in-kind for the SUV that combines a donation by Soo Motors with a purchase by the ARL. The truck hauls professors and students into remote areas to conduct research with the facility’s boat. The lab has already used it for transporting Adventures summer camp students, LSSU class field trips, and travel to various meetings throughout the state. Looking on from behind, from left, is ARL co-director Ashley Moerke, Foundation executive director Tom Coates, and ARL manager Roger Greil. For more information on supporting LSSU’s Aquatic Research Lab or other giving opportunities, contact the LSSU Foundation at lssu.edu/foundation or 906-635-2665.

Join the Superior Legacy Society today!

The purpose of the *Superior Legacy Society* is to recognize alumni and friends who have the foresight and generosity to name LSSU in their wills, trusts, charitable gift annuity funds, life income funds, and life insurance gifts. Sharing your intentions with us ensures that your wishes will be carried out according to your planned goals. As a recognized Society member you may also encourage others to follow your example. Please know that all information is kept confidential except for name recognition purposes. We acknowledge and respect those who wish to remain anonymous, but encourage you to inform the LSSU Foundation on a confidential basis to ensure your donor intent is met.

Membership information is available from the LSSU Foundation, the nonprofit organization that provides direct support to Lake Superior State University. You may join the Superior Legacy Society by going online

www.lssu.edu/foundation/legacy
or contact the LSSU Foundation
for further information
906-635-2665 or email foundation@lssu.edu

Through planned gift commitments and membership in the Superior Legacy Society you ensure the future and success of Lake Superior State University!

Students get fresh with local farmers market

By David Lockhart, LSSU PR Intern

Students in LSSU English professor Mary Been's First-year Composition classes had the chance to take a look around the local farmers market at the corner of Ashmun and Portage early last fall. Their mission? Find out what the local Slow Food Movement is all about.

Founded by Carlo Petrini to counteract the emergence of a fast-food culture, the Slow Food Movement became an international association in 1989. Today, there are more than 100,000 members in 132 countries worldwide. The movement's philosophy is centered on the pleasures of food and its tastes through biodiversity. The belief that pleasure has a direct influence on values, attitudes, and emotions is central to this philosophy. Focused on the social, economical, and environmental aspects of our daily diets, the movement promotes the concept of eco-gastronomy.

Eco-gastronomy is a type of consumerism that is value-based. It's all about maximizing the impact of the consumer's dollar. With the belief that "every little bit counts," eco-gastronomists rally around positive social, political, and environmental change no matter how big or small. The idea is that all consumers are co-producers of the food they eat if they remain well informed and take an active part in supporting the growers of their food.

The students visited the market twice. Once they became oriented with the market, they were given a set of questions to ask of the local farmers about farming production in our area. They returned the following week to get a chance to buy locally grown foods for themselves. In groups, the students were allotted up to \$25 to purchase enough food to prepare one dish per group. Later that evening, and the following evening, the students cooked up their creative and tasty dishes in the basement of Brady Hall.

The project was part of a semester-long theme for the classes based on Barb Kingsolver's 2007 book:



FOOD INTO VERBS – LSSU students Matt Quinn and Alyssa Rickley check their purchases at the Sault Farmers Market. Both were exploring the slow-food approach to cooking for a freshman composition project last semester. Student teams were given \$25 to shop a local market, prepare meals in the communal kitchen of Brady Hall, and then write a variety of papers that shared the experiences. Quinn is from Lathrup Village, Mich., majoring in fire science with dual minors in fire science and paramedic technology. Rickley is in liberal studies, from St. Ignace, Mich.

Animal, Vegetable, Miracle. It was the first of its kind for LSSU's English program and was received quite well by many students. This semester, students in some of Been's classes are studying Michael Pollan's book, *The Omnivore's Dilemma*.

"It was good to get outside and meet new people. Even though the farmers were very busy, they still took the time to answer our questions friendly and courteously," said Travis MacArthur, a freshman criminal justice major.

For many of the students, it was their first time to the local farmers market.

"Creating a greater amount of awareness makes the project

that much more memorable," says Been, who noted that two important cornerstones of the Slow Food Movement are the community and social impacts that the Sault's market cultivates.

The project was successful and the results were evident in the delicious and attractive dishes that the students created. Dishes included tasty and colorful salads with freshly made dressings, spicy salsas, crisp garlic roasted potatoes, chunky bison stew, and succulent stir fry with locally harvested wild rice.

In the writing portion of the project, students were asked to reflect upon their visits to the market, in combination with cooking on campus, in an essay that not only discusses their personal experiences, but also aims to analyze the social, economical, and environmental effects of the local Slow Food Movement.

The Slow Food Movement is ever increasing its presence among colleges and universities throughout the nation and the world. Whether it is through individual class projects such as this one or in other long term projects like the campus garden—which students and staff tended through the summer in front of Cisler Center—the influence is there. Continuous efforts to increase "environmental literacy" are beginning to take place here at LSSU.

With a growing awareness of the Slow Food Movement comes a more conscious future, a future that is delicious, diverse, healthy, humane, sustainable, and undeniably local.

During the late spring, summer and fall, the Sault Farmers Market meets every Wednesday from 4-7 p.m. through mid-November. During the summer, it meets on Saturdays, also. For more information about the farmers market, contact Jim Lucas at the Sault's MSU Extension Office, 906-635-6368.

The Future of Laker Athletics



Design and renderings by Timothy E. Fairbanks / Geometrik Studio.

LSSU recently announced a \$5 million project that will renovate and/or expand 36,000 sq. ft. to serve the James Norris Center's Taffy Abel Arena, Bud Cooper Gymnasium and Robert Arbuckle Student Activity Center.

The privately funded project will add services and areas that will enhance the environment for athletes, fans, and students who use the Norris Center for classroom or recreation daily, while adding critical support to the LSSU Athletics Dept. Construction is projected for completion in fall 2012.

"We're very happy to announce this project," said LSSU President Tony McLain. "With all of the bad news and challenging times around the state and nation, it's great to have some good news happening right here. This expanded facility will serve our students for many decades. The best part is that it's being made possible through private donations. This illustrates the strong support we have in the Laker community and it allows the university to continue to focus its resources on academics."

Built in 1976, with a renovation of the Taffy Abel Arena in 1995, the Norris Center has served generations of LSSU students and student athletes. The latest expansion will provide an expansion to LSSU Athletics Dept. offices that are currently spread around the complex, as well as several other features, including an athletic/academic center, new locker rooms

in the Student Activity Center, a dining/meeting area called The Laker Club and expanded facilities for Laker hockey, including a lounge and strength and conditioning area.

The new office space portion of the project will house all Great Lakes Intercollegiate Athletic Conference (GLIAC) coaches and Athletics Dept. staff, and will provide a reception area for recruits and families to meet coaches and other staff members. On the second floor, an athletic/academic center will feature 800 sq. ft. of quiet study space with team study tables for tutoring and individual studies, along with two group study rooms.

Adjacent to the center, the new "Laker Club," a 1,200 sq. ft. dining/meeting facility, will seat 75 for a BlueLiner luncheon or provide space for BlueLiner, Laker Club and Laker hockey functions on game nights. It will feature a full kitchen facility operated by LSSU Food Service, flat screen televisions and a fireplace, all overlooking the wooded area on the southwest side of the facility.

Also on the west side of the Norris complex, the Student Activity Center will see a 4,000 sq. ft. expansion that will provide locker rooms and facilities to create a new home for the LSSU track, cross country, tennis and softball teams.

Finally, a new atrium – a new front door for Laker athletics -- will welcome students, visitors

and fans. The atrium will wrap in two new entrances to Taffy Abel Arena, a new ticket/fan shop, and a redesigned Cooper Gym lobby, all of which will provide improved comfort and flow for Laker fans.

Take a look at what the finished product will look like and follow new developments at norriscenterproject.com.

Be a Part of Laker History

Here's your opportunity to etch your name into the history of Laker Athletics while supporting its future! The plaza approach to the new Atrium of the James Norris Physical Education Center will feature an opportunity for LSSU fans to become a permanent part of Laker Athletics. Now you can leave your legacy with a personalized plaza brick.

Your brick can be personalized with individual and company names, dates and special messages. The 4" x 8" and 8" x 8" engraved bricks are a way to recognize and honor families, alumni, and special LSSU memories. Each brick will be permanently displayed in the Plaza.

Order online at www.lssu.edu/foundation/pavers.

Remembering a Senator: Alumni write about Ted Kennedy

Many alumni remember when Senator Ted Kennedy appeared on the LSSU campus in 1978 to deliver a speech about the late Sen. Phillip Hart, for whom the LSSU Hart Scholarship is named. Alumni Joe Paczkowski '82, who is taking classes on campus again, and Judy Geniac '83 wrote to us with their memories of the senator, who died Aug. 25, 2009. For more information on the Senator Philip Hart Scholarship, visit www.lssu.edu/Hart

In memory of two senators

By Judy L. Geniac '83
Littleton, Colorado

I met Senator Ted Kennedy when he flew to Sault Ste. Marie to present the first set of Philip Hart Memorial scholarships. I was one of the LSSU recipients.

I was honored just to be in the same room. He was happy to be honoring a friend in the Senate who had recently died from cancer: Sen. Philip Hart, who was known as "The conscience of the Senate."

Sitting next to Ted Kennedy on that stage was surreal. I often think of the common threads that hold us all together, and that day, while I understood some of the threads that linked me to Sen. Hart, I didn't know of any that linked me, or anyone else, to Sen. Kennedy.

More than 30 years later, I can see a number of those threads were the same for both – interest in public service, knowing that details matter, wanting to do good. I would never say that what I do approaches what Senators Kennedy or Hart have done, just that some good may have rubbed off.

I've been thinking of both senators on a day when we honor Sen. Kennedy. What would I say to them if I could say anything at all? I'd say "thank you," though it wouldn't be enough.

I wonder what they would think of how I've made a career out of the education they helped me achieve. I've worked for the Michigan DNR, the US Fish and Wildlife Service, the Army Corps of Engineers, the Bureau of Land Management, the National Park Service, and I'm now with the USDA Forest Service. They might laugh and ask me, "Can't you keep a job?!"

I wish I could tell them that they gave me the chance to manage wildlife habitat, be a fire fighter, lead youth groups on environmental projects, lead public nature hikes, mitigate abandoned mine lands, work on environmental planning, help facilitate research, link hundreds of interns to amazing opportunities, and build collaborations with government and non-government partners.

I owe them, Sen. Hart's family, and LSSU a great deal of gratitude. I hope they would be happy with how I have applied what I have learned in school and in life, particularly from the examples they set.

I do have regrets. I regret that I didn't say "thank you" sooner. I am saddened that Sen.



BIG MAN ON CAMPUS – Sen. Ted Kennedy greets campus community members when he spoke at LSSU in 1978.

Kennedy and Sen. Hart both lost their fight with cancer. Having lost my father and a son in such a tortuous way, I have only respect for the fortitude they had in that fight.

Odd that all these thoughts come at a time when the headlines are all focused on health care. It makes me wonder if it means something. It seems as if they were always trying to make sense of things. They wanted to and did make a difference. I salute them.

I've had a career that has exceeded my own dreams. How can "thank you" ever be enough?

They did what? Kidnapped Kennedy?

By Brian McGillivray

This story originally appeared in the Fall 1995 issue of the Laker Log.

Young, crazy, and with nothing to lose, some Lake Superior guys will do just about anything for the edge, from planting fortune cookies predicting a Democratic victory at a Republican fundraiser, to kidnapping a US Senator from his LSSU escort.

LSSU alum G.T. Long tells a "kidnapping" story complete with his impersonation of U.S. Sen. Ted Kennedy, D-Mass.

In 1978, Kennedy was to give a speech at LSSU, and he flew in to Kincheloe Air Force Base with freshman US Sen. Don Riegle and Carl Levin, candidate for the

US Senate. Knowing the Lear jet had no bathroom, Long had fellow alumnus Mitch Irwin show Kennedy to the base bathroom when the plane landed. Irwin introduced himself as a candidate for the state senate and asked if Kennedy would do an endorsement tape for him.

Running late, Kennedy said it would have to wait until after the speech on campus.

"There was no way we would get to Kennedy after the speech. LSSU president Ken Shouldice would put Kennedy into a limo and speed him back to the plane," Long said. The only way was to appropriate Kennedy at a more opportune moment.

"So as soon as the speech is done, we get two of our biggest guys to grab Kennedy and say, 'This way to the car, Senator.' The rest of us form a human wall to keep Shouldice from Kennedy."

Kennedy looked over the script on the drive to the airport and, once there, he was led back into the bathroom with the tape recorder.

"Mitch Irwin: great Democrat, great Catholic, a good man for the state senate...'. Teddy does the whole routine," said Long. "But right in the middle, someone flushes a toilet, and the sound ruins the tape."

"Riegle, Levin come in. Kennedy's aides are telling him they're late and have to go. Shouldice arrives at the airport looking for Kennedy, and he's yelling and screaming," Long recalled.

"Kennedy stops, lights up a cigar, looks at Irwin, looks at me and says, 'Don, you stop Shouldice; Carl, you watch that bathroom door. We'll do it again.'"

"So, Levin is watching the stall doors and Don Riegle is keeping the college president from strangling us. People couldn't believe we had Ted Kennedy endorse Mitch Irwin for the state senate," said Long.

I am not sure what time it was when we found out that Mitch had won, but there was quite a celebration that ensued. I was very proud to have been part of that campaign and went on to work on many others, including Sen. Carl Levin, Congressman Bart Stupak, Sen. Don Riegle and even GT Long's campaign for state representative.

Today, as I sit in class and I look around at other students, I feel a bit dismayed. There seems to be a lack of fire in their eyes. No sense of public service. No need to make waves. A professor will stand in judgment of a great man like Kennedy and make joking reference to a life of public



Sen. Kennedy and Joe Paczkowski

The Lion of the Senate is gone

By Joe Paczkowski

It's 31 years later and Lion of the Senate is gone now. All of us who learned so much from the Senator were saddened to watch the memorial service on TV. It brought tears to my eyes as I watched the end of an era.

My political experience began in 1978 with the Irwin for State Senate campaign. I was a sophomore in Alpena High School and was intrigued when GT Long came to our civics class to talk to us about volunteering for Mitch's campaign for extra credit. I knew who he represented, even though he was not allowed to tell us as he had been asked to remain non-partisan. The energy and the excitement had already hit Alpena. Who else could he be with?

I joined the campaign and was introduced to a world of door-to-door and event organization. What a sense of purpose! We won that campaign and I remember my first trip to Sault Ste. Marie as part of the volunteer staff. Our Sault Ste. Marie campaign office was in the old bank building at the corner of Ashmun and Spruce (now being refurbished). We watched as the paid staff, including GT, rushed around answering phones and collecting poll reports.

service so huge as to make his own pale in comparison without so much as a peep from the students. I count myself among them.

The difference is that I know the truth and have a strong sense of who I am as well as who Ted Kennedy was. I look to my fellow students and say to myself, "I don't think they care anyway."

What would I gain from a full debate with Professor X? No wonder there is little interest in running for office. After all, who would want to serve in government in today's world with all the cynicism and disrespect for public policy makers from individuals who are absolutely positive they could do it better but lack the commitment to try? Who would want to be the brunt of those lobbyist-controlled circuses that we have seen in the news over the summer? Who would want to have every aspect of their lives in the public eye? Why should we hear the call to public service when so many like Professor X stand ready to ridicule? What happened to "Judge not lest ye be judged" and "Let he who is without sin cast the first stone?"

I have to admit that I was raised on the words of John Kennedy. My family admired John, Bobby and Ted. When I was a little boy, I collected political cards, not baseball cards. I still have a few of them with my name written in pencil on John Kennedy's card and my brother's name written on Bobby Kennedy's card.

The words of John Kennedy's speech still guide me in my everyday life, whether it is in service to my country or public service in government.

"Ask not what your country can do for you; ask what you can do for your country."

I choose to live by those words and by the words of Ted Kennedy, who said, "The work goes on. The cause endures. The hope still lives and the dream shall never die."

Members of 1973-74 JV hockey team reunite

By Daniel May, Kalamazoo

I read of Paul Theriault's time in Japan from the Spring 2007 Laker Log ("Paper Cranes? Not origami, but a hockey team," by Bill Crawford). Paul was the Junior Varsity Coach in 1973 when I arrived on campus at what was then Lake Superior State College. Paul was the finest coach I had as a player, and reading the article got me thinking of a reunion of the team that won the International Collegiate Hockey Championship (ICHL) title, the JV Soo Lakers of 1973-1974.

We played in a three-team league: LSSC, Sault College and Algoma College. We were a team made up of American boys from the Midwest playing a 14-game schedule. Playing each of these teams seven times each was quite interesting, and as is often said, "Familiarity breeds contempt."

We grew together as a team, gelling at the right time. By playoff time in early March, we were ready to go. We beat Algoma in a two-game, total-goal series for the title, out-scoring them 14-6.

After reading the Log article, I decided to contact Susan Fitzpatrick in the LSSU Alumni Office about my idea of a reunion for the team 35 years after the championship. Susan gave me the green light to plan it and, with her help and a photo of the team from the Laker locker room taken in March 1974, I was able to identify teammates. I had transferred to Western Michigan in January 1975, and it was difficult to remember everyone. I enlisted my friend and former teammate, AJ Combe, for help. While speaking to AJ, who lives in Arvada, Colorado, I found out that his wife is a Brimley native and the family had scheduled a reunion in August 2009 in Brimley. Knowing that AJ and his family were going to be up in the Brimley area, we decided to hold the reunion on Saturday, Aug. 8.

We were able to contact a



FAMILIARITY BREEDS NO CONTEMPT – Four members of the 1973-1974 JV Laker hockey championship team reunited on campus in August 2009. The four toured campus, Taffy Abel Arena and spent time with their former coach Paul Theriault (who is still coaching!) Pictured above are Ken DeBusscher in red sweatshirt, AJ Combe in black jacket, Joe Wolf in yellow shirt, Daniel May in green shirt/blue coat and Coach Theriault holding jacket. (Photo courtesy of Daniel May)

number of teammates and ended up with four members of the team: AJ Combe, Joe Wolf, Ken DeBusscher, and me. Most important was that our coach, Paul Theriault, would be able to attend.

We all made our pilgrimage to the Soo on Aug. 8 and we were met by Susan, who hustled over to meet with us at the entrance of the Taffy Abel Arena. Susan had completed a duathlon that morning and it was great that she took the time to meet with us.

Susan gave us some trinkets from the Alumni Association and led us into the Taffy Abel Arena, where current coach Jim Roque met us for a tour of the locker room and the arena. Coach Roque was fantastic and we took photos in the locker room and on the ice surface (sans ice).

After talking Laker hockey with Coach Roque, we were ready for a tour of the campus with a student tour guide that Susan had set up for us. Off we went for the trip down memory lane. Highlights were the academic buildings that we could remember and, of

course, Brady Hall, our home as freshmen. We told many stories of our time in the hallowed halls of Brady and took time to get photos of our dorm rooms.

Next, we headed to our pre-determined debriefing site, the Alpha Bar. We met Coach Theriault at the Alpha and had a nice time speaking about families and our shared time in the special season of 1973-1974.

Later that night, we all were invited to Paul's wonderful home for food and drink and many more stories of our lives since we left LSSU. Everyone remarked what a great idea it was to get together, and to see the sheer delight that was had by all was priceless. We collected business cards, and promised to stay in touch at our departure later that evening, with little doubt that we all enjoyed each other immensely.

See more photos at alumni.lssu.edu and click on "Events" on the left.

Laker community loses its most beloved figure

By Linda Bouvet, LSSU Sports Information Director and Bill Crawford, retired LSSU Vice President of University Relations and Marketing

Ronald "Bud" Cooper, the man who proudly carried Lake Superior State University's banner for a lifetime, died Nov. 29. He was 80.

A former student-athlete, coach and director of athletics, Bud was LSSU's most well-known, steadfast, approachable, beloved figure from the time the school opened its doors in 1946. As his role with the university ebbed and flowed, his loyalty never wavered. He left behind a legacy of commitment and excellence that his successors will forever strive to reach.

Even while battling poor health during the past decade, Bud's influence was prudent and positive. He continued to head the LSSU Athletic Hall of Fame Steering Committee, serve as a charter member of the LSSU Alumni Association, help with the Bud Cooper Golf Classic, maintain contacts with alumni, and offer words of advice to current athletes and coaches. He spoke at Hall of Fame events in July and October, and attended LSSU hockey and basketball practices until shortly before his death. Bud's stories and anecdotes were the highlight of sports banquets for decades, and his eyes sparkled when he lined up for photos with student-athletes.

For 26 years, until his retirement in 1986, Bud served as director of athletics at the Sault Branch of Michigan Tech/Lake Superior State College. During that tenure, he was a founder of the Great Lakes Intercollegiate Athletics Conference (GLIAC) of which LSSC/LSSU is a charter member. Bud joined forces with Kenneth Shouldice Ph.D., then president at LSSC, to begin hockey as a sponsored sport in 1966. He hired Ron Mason as the first coach of the varsity program. The Lakers won



Ronald "Bud" Cooper

National Association of Intercollegiate Athletics (NAIA) championships in 1972 and 1974.

Bud was responsible for hiring dozens of coaches over the years at Soo Tech and LSSC, but even coaches who weren't hired by him appreciated his wisdom and thoughtful advice.

"He was near and dear to my heart and somebody I looked up to with great admiration and respect," said LSSU third-year men's basketball coach Steve Hettinga. "I enjoyed our talks. I'm sure I will miss him more as the days go by and don't see him sitting in the front row across the gym." Hettinga's first conversation with Bud was a light-hearted grilling during a press conference when he was hired in August 2007. Hettinga quickly ascertained that he was answering to a legend.

"I can only imagine how people who knew him for a lifetime and the community feel the loss," Hettinga said.

Laker hockey coach Jim Roque ('87) was a student-athlete at LSSU when Bud retired as director of athletics. Today, Roque coaches Bud's grandsons, Brad and Brian.

"He's the guy who started hockey here, and he had to battle to get it," Roque said. "The vision he had to think it would be a

really good thing to add hockey here was extraordinary."

"I met Bud for the first time in 1966, when I was applying for the hockey coaching position at Lake Superior," said Ron Mason, who recently retired as director of athletics at Michigan State University. "We became instant friends."

Mason coached the Lakers from 1966-73 and had four 20-win seasons. He went on to have a legendary career at MSU and is the NCAA record holder in career wins with 924.

Mason last saw Bud in July when they attended Jeff Jackson's induction into the LSSU Athletic Hall of Fame.

"He had a great sense of humor and was a great storyteller," Mason said. "He loved to have a good time. All the stories you've heard about him are probably true. The last time I saw him was at the golf outing (in July), and I'm really glad now that I was there. He was still himself, and that's how I will remember him."

Two other former Laker athletes went on to be coaches and directors of athletics.

"It's hard to put into words what Bud Cooper meant to Lake Superior State University and the athletics program," said Kris Dunbar '92, who has been director of athletics since 2006 following a successful eight-year stint as women's basketball coach. "He was a coach, mentor and friend that made a difference in many people's lives. I only hope that I can carry on the tradition that he started."

The athletics program will be forever indebted to Mr. Cooper's dedication and vision."

"He saw something in me professionally much sooner than I saw it in myself and for that I will forever be grateful," said Jim Fallis '74, a former Laker All-America wrestler, championship coach and director of athletics who is currently the AD at Northern Arizona University. "I have many



COOPERS SWINGIN' IN THE RAIN – In this photo of the September 2005 Bud Cooper Golf Classic, showers didn't deter three generations of the Cooper family from joining 100 players in what was the tournament's 16th year at the Sault Golf and Country Club. Coopers pictured from left are Craig (Bud's grandson and, at the time, an LSSU sophomore), son Dave, Bud's brother Jim, Bud, sons Kevin and Rick. Dave is from Dallas and Rick from the Seattle area.

fond memories of Bud and how he helped a young and inexperienced coach mature, and had faith in me to handle administrative responsibilities. I am thankful for the time under his tutelage because I make decisions every week which I can relate back to experiences I had with Bud. He will always be THE cornerstone of Lake Superior State athletics, and those of us who knew him are truly blessed. I will miss him, but will forever be thankful that I saw and experienced that soft spot in his heart he had for young people."

Bud influenced former Laker hockey player and coach Rick Comley '71, who is currently the Spartans' head coach and ranked sixth in all-time NCAA hockey victories.

"Bud Cooper was as instrumental in my career as anyone, and I will forever thank him for his guidance as an impressionable athlete and a young coach,"

Comley said. "His passion for Lake Superior and his dedication to its success left a great impression on me that I have carried forward with me to this day. The noon-hour tennis matches and volleyball games, where losing was unacceptable, still bring a smile to my face. Lake Superior and the Soo are better places because of Bud. My best wishes to his family and we will all miss him."

Ever the competitor, Bud was a star athlete at Sault High, from which he graduated in 1947. He played basketball, football and ran track at then-Sault Tech in the late 1940s, and earned his bachelor's degree in physical education at Central Michigan University in 1951. While at CMU, Bud played football, basketball and baseball. He was headed for a professional baseball career until he suffered a badly broken leg while playing second base for CMU in a 1950 game at Tiger Stadium.

After graduating at CMU, Bud began coaching and teaching in Mt. Pleasant. He returned to the Sault shortly thereafter, where he coached the Sault Tech Hornets basketball teams from 1954-1959 and posted a 100-32 record. He also coached football at Loretto Catholic Central High School during this period, and began a football/basketball officiating stint that ran for 15 years. He helped coach Sault High basketball in the early 1960s after taking over as AD at the Sault Branch, and he returned to CMU to earn his master's degree in education. While the Sault Branch/LSSC AD, he also coached tennis, golf and bowling.

Bud started the Cager Club at LSSC in the 1970s, was a life-long member of the Soo BlueLiners, was the driving force behind the LSSU Athletic Hall of Fame, of which he is a charter member, and oversaw the annual fall golf tournament that bore his name and

from which women's athletics at LSSU benefit. His endowed scholarship will mean financial support for Laker female athletes well into the future.

It was during Bud's tenure that two great Laker hockey traditions began: sounding the ship's horn after goals and victories -- LSSC was the first collegiate institution to employ a ship's horn -- and ringing the Hoholik Victory Bell outside the Norris Center.

Cooper Field to the west of the Norris Center and Bud Cooper Gymnasium inside the building are named for the patriarch of Laker Athletics. Bud was often in the gym for basketball and volleyball practices and games, as he was at the Norris Center's Abel Arena for hockey practices and games. He saw his grandsons Brad and Brian both on the ice for the Laker hockey team in October.

Bud was a 1992 recipient of the Donahue Award for service to the GLIAC and has been recognized as a founder of the CCHA. He was inducted into the Upper Peninsula Sports Hall of Fame in 1981 and received the Sault Ste. Marie Sportsman of the Year Award in 1992.

Born September 4, 1929 in Sault Ste. Marie, Bud turned 80 in 2009 after one day earlier celebrating his 60th wedding anniversary with Muriel (Papineau), his high school sweetheart. She survives him.

Also surviving are sons Rick (Robin) Cooper of Mill Creek, Wash., David (Lynn) Cooper of Coppell, Tex., Kevin (Pam) Cooper DDS of the Sault and Kurt in Trout Lake; a brother, James (Anna) Cooper of Sault Ste. Marie and a sister, Evelyn (Henry) Magalski of Saginaw; and grandsons Patrick, Benjamin, Bradley, Craig and Brian.

Bud was predeceased by a sister, Barbara, and a brother, Billy.

Private funeral services were held in the Sault. A memorial service will be conducted September 10-11 on the LSSU campus. Donations in Bud's name may be made to the Ronald "Bud" Cooper Endowed Scholarship Award.

Honoring an Icon

Planning is under way for a celebration of Bud Cooper's life and his legacy during activities September 10-11 on the LSSU campus and at the Sault Ste. Marie Country Club.

The two-day event starts at the Norris Center with a Friday program at 6 p.m. in the gymnasium that bears Bud's name. A slate of speakers is being assembled and everyone is invited to attend.

After discussions with the LSSU Foundation, the Cooper family has requested that the annual Cooper Classic golf outing be discontinued. It is the family's recommendation that future fundraising efforts in Bud's memory be directed to the Ronald "Bud" Cooper Endowed Scholarship Award for athletes from each of the non-fully funded, Division II women's athletic programs.

"We feel that Dad's legacy is being properly honored by the university with the naming of the gym, his endowment and the coaches' trophy awarded to student-athletes each year," said Kevin Cooper '79. "Dad always felt extremely proud about recognizing the impressive accomplishments of our students; supporting the Cooper Endowment is a great way for alumni and friends to remember him."

"Initially, we were very disappointed when the Cooper family requested we discontinue the Cooper Classic," said Tom Coates, executive director of the LSSU Foundation. "But once we talked more about it, we all agreed that targeted support of the endowed award would have been appreciated by Mr. Cooper."

For those who would still like to play golf and gather informally to socialize and reminisce, arrangements will be made for play on Saturday, Sept. 11, at the Sault Country Club. Details will be available in the coming weeks. Watch for future mailings and announcements on the university and Foundation websites regarding these events.

Memorial gifts to the Bud Cooper Endowed Award may be directed to the LSSU Foundation, 650 W. Easterday Ave., Sault Ste. Marie, MI 49783 or online at: lssu.edu/foundation.



LAKER LEGACIES – Laker legacies Ron Mason, Bud Cooper, and Terry McDermott (l-r) were all smiles after the 2009 Cooper Classic on Sept. 12.

40s

Peter Gianakura '48, Sault Ste. Marie, hosted an open house at the Chippewa County Historical Society in honor of his recent book, *An American Café Reflections from the Grill*. He was born in Sault Ste. Marie of Greek immigrants and operated the American Café out of a Soo Theatre storefront on Ashmun Street for 43 years.

Prof. Ken Hatfield '46, Sault Ste. Marie, addressed the Lake Superior Elders in September 2009. He spoke about his recent Elderhostel experience on the Navajo Indian Reservation in Arizona. Hatfield is a retired LSSU geology professor.

50s

Richard '57 and Beverly (Treadwell) Campbell '72, Kincheloe, celebrated their 50th anniversary at the Brimley Casino. Almost 150 guests were in attendance, including their maid of honor, best man, bridesmaid, and ring bearers. The two were married on Oct. 10, 1959. Richard retired from the National Weather Service and Beverly continues to enjoy her career as a registered nurse.

Think of the future...

Your charitable donation to the Fund for LSSU will greatly enhance the university experience of our students. Your gift is the essential base for making a difference in their lives.



The Fund for LSSU allows us to grant scholarship aid and assistance for hard-working, talented students and assists in providing top-notch classrooms, labs, study spaces and facilities.

Now more than ever, your support is vital. Without your generosity, we could not continue to offer innovative programs to our students. Gifts to the Fund for LSSU are critical to advancing the level of high-quality education at Lake Superior State University.

Thank you for making a positive impact in the lives of our students.

Yes, I want to contribute to Lake Superior State University's Success!

☐ Enclosed is my gift of ☐ \$1,000 ☐ \$500 ☐ \$250 ☐ \$100 ☐ \$50 ☐ Other \$_____ Payable to the LSSU Foundation.

Credit Card Account #: _____ Expiration Date: _____

Signature: _____

Name: _____ Phone Number: _____

Address: _____

E-mail Address: _____ City _____ State/Province _____ Zip/Postal Code _____

☐ Yes, my company (or my spouse's) will match my gift.

(Contact your HR office or website for information.)

☐ Please send me information on planned giving.

Mail to:

LSSU Foundation
650 W. Easterday Ave.
Sault Ste. Marie, MI 49783

You can also make an online gift through our secure website at www.lssu.edu/foundation/giving/compform.php

LSSU Foundation • 906-635-2665



First Women's Walk brings in \$20,000

LSSU held its inaugural Women's Walk on Sept. 12, 2009, and raised more than \$20,000 for Laker women's athletics. Coaches, athletes, parents and friends of the university pledged money in order to participate in the event, which included a 30-minute walk through campus, special events, and lots of prizes.

"Every athlete, parent, and participant I saw had smiles on their faces and understood that what they were doing will benefit their daughters and friends, and that this event really has a greater meaning than just the donation," said LSSU assistant women's basketball coach Shannon Eggers, who was chair of the event. "Putting on the Women's Walk was a great way for our student-athletes to engage with each other in a fundraiser that would benefit specific programs and women's athletics in general. They showed their support for one another."

Eggers participated in her first Women's Walk when she was an undergraduate student at Nebraska-Omaha. LSSU's event was held in conjunction with the annual Bud Cooper Golf Classic.

LSSU student-athletes have made community service a priority during the past three years. At the same time, partial self-sustainment has become a reality for the LSSU Department of Athletics. The Women's Walk served both objectives and is expected to be an annual event.

"Having a fundraiser such as this helps student-athletes really understand that it's not all about the amount of scholarship they are playing on, but how much they can give back and say thanks to their coaching staff, program, and university," Eggers said.

"Athletes who played here before them have helped them to be where they are today. So in the end, every dollar raised is a way of saying 'thank you' to those before them."



Bill Barrette att. '72, Negaunee, is the recipient of the 2009 Upper Peninsula Choral Leadership Award. This award was created to recognize persons who have made significant contributions to choral music over an extended period of time. For the past 25 years, Bill has been the director of music at St. Paul's Church, Negaunee.

Tom Ewing '73, Sault Ste. Marie, was the recipient of the Senior Award at the inaugural UP Service Awards. He has dedicated himself to promoting community events and causes, including the Soo Theater Project, through his radio show on WSOO for many years. Tom and Radio Soo have been especially good to LSSU through the years. He has been an Elk for 22 years and a Rotary Club member for 28 years.

Stuart Flynn '75, Phoenix, has been named dean of the University of Arizona College of Medicine-Phoenix in partnership with Arizona State University.

Sally (Linsley) Gebben '79, Allegan, a biological science graduate, is the recipient of the Environmental Award from the Michigan Deputy Ranger Patrol for her work in wildlife rehabilitation.

Kathy (Graff) Marsh '76, Roscommon, is dean of instruction at Kirtland Community College.

Rich Miller '77, Livonia, is working for a bio-tech firm in Ann Arbor that produces micro-carriers for the animal health industry.

Kevin Rabineau '75, Battle Creek, is the dean of Arts, Sciences and Regional Education at Kellogg Community College.

James Childs '79, Traverse City, is president of OptiTemp, which was recently noted as one of Michigan's "50 Companies to Watch." In order to receive the award, companies must be headquartered in Michigan, employ 6-99 full-time employees, have between \$750,000 and \$50 million in annual revenue, and demonstrate an intent and capacity to grow. OptiTemp designs and manufactures state-of-the-art heat transfer solutions at its manufacturing facility in Traverse City.

Thomas Coombs '87, Southgate, has been appointed chief of the Southgate Police Dept. Coombs has been with the department for 22 years, has worked undercover with the Downriver Area Narcotics Organization, and was commander of the Downriver Special Weapons and Tactics team for 19 years. He graduated from LSSU with a bachelor's degree in criminal justice and a minor in sociology.

Betsy (Boyer) Demaray '83, Sault Ste. Marie, was selected as the newest member of the Rotary International Board of Directors, for a two-year term beginning July 11, 2011. Demaray will be the first woman from the Western Hemisphere and the second woman ever to sit on the board. She is currently a broker with Smith and Company Real Estate and was selected as LSSU's Outstanding Alumna in 2009.

Jim Kulka '84, Colorado Springs, has started his own business, Natural Snack Vending Inc., in Colorado Springs.

Scott Shackleton '83, chair of the Chippewa County Board of Commissioners, and Jeff Moran, Chippewa County Sheriff, set up the annual Chippewa County Food Drive on Dec. 6. The annual event collects hundreds of pounds of food and many toys -- all of which stay in the area to be distributed to the needy through the Salvation Army and EUP Food Bank. Both Shackleton and Moran are from Sault Ste. Marie.

Kristine Erickson '83, Chicago, is being honored by the National Association of Realtors with its prestigious Realtor association Certified Executive designation during a ceremony in April at Quebec City/Montreal. The award recognizes exceptional efforts made by a Realtor association executive. She joins 349 state and local Realtor association staff from throughout the nation who hold the designation. It has been awarded to only 14 employees of the NAR's 500-member national staff. Erickson, who has been with NAR for 16 years, is a policy consultant in the Board Policy and Programs Division at the NAR headquarters in Chicago. She holds a bachelor of arts degree in English from LSSU, where she was co-editor of the *Compass*, and a master of fine arts degree in English from Arizona State University.

Foundation appoints new director, elects new board reps

The LSSU Foundation is pleased to announce the appointment of Thomas W. Coates as its executive director. Coates' hiring was announced at the Foundation's 2009 annual meeting, when the panel also appointed four new board members and reappointed two others.

As director, Coates will direct all fundraising efforts and philanthropic activity directed to the university. He will work with the board to raise donations in the forms of major gifts, capital campaigns, and estate and planned gifts to advance LSSU academics and athletic programs.

Coates is a 1986 LSSU graduate who most recently served as the LSSU Foundation's director of athletic development and assistant athletics director.

"We are pleased to have Tom Coates at the helm of the LSSU Foundation," said Tom Robinson, board chair. "He is dedicated to the success of LSSU and understands the tremendous impact that our alumni and friends can create with their support and commitment to the future of the university."

Those recently appointed to the board at its annual meeting included James Bearman '77, Jackson, to a term expiring this year; David Saunders '80, BDO, Sault Ste. Marie, Ont. to a term expiring in 2011; and Larry Westby, Vanderbilt, to a term expiring 2011. In addition, Walter North, St. Ignace, returned to the Foundation board for a term that expires in 2013.

The board reappointed two current members to four-year terms: Charles Cliff '77, Johnstown, Penn., and William Connolly '79, Sault Ste. Marie, Mich.

"I feel fortunate to work



Tom Coates

with such a talented and motivated board of directors," Coates said. "Together, we're working to further enhance the efforts of the LSSU Foundation and the university."

The new board members are part of a 30-member panel that includes business and community leaders, LSSU administration and alumni. The board governs the 501c3 non-profit organization, whose sole purpose is to raise contributions for LSSU in support of a variety of areas, including scholarships, academic and athletic programs, physical plant, and capital campaigns.

For more information on the LSSU Foundation or how your financial support can help the university, please visit the Foundation website lssu.edu/foundation or call 906-635-2665.

Golf is back!

LSSU took a step toward improving its Great Lakes Inter-collegiate Athletic Conference President's Cup standing and the overall growth of the Laker athletics program by bringing back men's golf and adding a women's golf team in fall 2009.

Fall and spring seasons are offered for both sports, and national championships for both sports are held in May. GLIAC men's teams hold their league championship in the fall and spread three NCAA regional qualifiers throughout the year. Women's teams, meanwhile, hold their GLIAC Championship in late April.

LSSU, which has offered men's golf off-and-on since 1951, last competed in the sport during the 2004-05 school year.

"We had been weighing the pros and cons of adding sports for the past couple of years, and adding golf was by far the best option," said LSSU Athletics Director Kris Dunbar. "We wanted to add something that is popular in northern Michigan, offered by most GLIAC schools and has a relatively low per-player cost. There are plenty of great golf courses within an hour's drive from here, and golf is something our student-athletes can play for a lifetime."

During the first season, freshman Sean Stubbs of Sault Ste. Marie, Ont., had the low average for the men at 79.3. Freshman Brent Vizina of Indian River was second at 80.0. The Lakers placed 10th at the GLIAC tournament held in early October in Marquette and will resume men's competition April 2 in Georgetown, Ky.

"The men's and women's golf teams are very young teams that

will only get better as the players mature and gain competitive experience at the Division II collegiate level," said LSSU first-year coach Jamie Davison, who is the golf professional at The Oaks in Kincheloe.

Although women's golf is officially a spring sport, the Lakers played in five fall tournaments. Freshman Meredith Cleary of Ontonagon is the top female golfer on LSSU's team, which resumes competition April 16 at Ashland.

"I think the experience that both teams gained during the fall season will help them be more prepared for when we start our spring season in April," Davison said. "Because of the golf programs, LSSU has a number of students who are considering coming to school here in 2010 and they're looking forward to a chance to compete for spots on both teams."

Get more information on Laker sports at lssu.edu/athletics.



Susan Autore '91, Sault Ste. Marie, performed in the Lock Cities Chorus of Sweet Adelines International benefit concert for the Best of Friends Humane Society at St. Joseph Parish Hall in Sault Ste. Marie.

Ronda (Helinski) DeCaire '92, Bristol, Ind., is the superintendent of operations for the Elkhart County Parks Department in Elkhart, Ind. She oversees the natural and historical interpretation staff as well as marketing, special event planning, and volunteer coordination within the parks.

Rick Gray M.D. '91, Scottsdale, Ariz., is to be inducted into the Greater Otsego Sports Hall of Fame. Gray, who graduated from Gaylord High School in 1987, was one of the best basketball players in school history, ranking no. 5 on the school's scoring list. He went on to play basketball at LSSU. He is now a renowned surgeon and researcher at Mayo Clinic - Scottsdale. Dr. Gray received the Kenneth Shouldice Achievement Award from the LSSU Alumni Association in 2006.

Andrea Guerriero '95, Kitchener, Ont., owns her own interior design and decor services company, Dre Designs, in Toronto, Ont.

David Jentoft '98, Kincheloe, has been hired as the Michigan Department of Natural Resources and Environmental Quality district biologist out of the Sault field office.

Cale Krezek '99, Sault Ste. Marie, Ont., has been sworn in as president of the Sault Ste. Marie Chamber of Commerce. Prior to assuming the role of president, Krezek served as both its first and second vice-president and as chair of the agency's annual Home and Outdoor Show organizing committee.

Kevin Miller '93, Washington Township, received the Sterling Heights Police Dept. Officer of the Year Award. He has been working on the computer crime unit as a forensic computer examiner.

Coralyn Nyssen '90, Byron Center, has been named an assistant coach with the Aquinas College women's basketball program. Nyssen was a standout at Wayland and a three-year varsity starter at LSSU. As the varsity coach at Hopkins, she led the Vikings to three consecutive district finals.



Kelly (Hirdning) Percy '94, Charleston, SC, has joined Keller Williams Realty Charleston-West as an agent. Previously, Percy was a self-employed corporate recruiter. She has a bachelor's degree in business administration from LSSU.

Marty Reinhardt '94, Gwinn, has been hired by Mid-State Technical College as a sociology instructor. Previously, he worked as an outreach specialist and distance learning adviser at the University of Wisconsin-Superior. Marty is also the chief executive officer and American Indian education specialist for Reinhardt and Associates, which provides education services. Besides his LSSU degree, Reinhardt holds a doctorate from Penn State and a master's degree from CMU.

Jerome Schwind '94, Canadian Lakes, is president of Isabella Bank Mecosta Division. He recently graduated from the prestigious Graduate School of Banking at the University of Wisconsin-Madison. Schwind joined Isabella Bank in 1999. He lives in Canadian Lakes with his wife, Deborah, and their children, Jacob and Alexandria.

Kelly Bruning '94, '98, Rogers City, has published "Misadventures and Fishing Tales," a collection of short stories about some of her outdoor excursions, available online through Lulu.com and Amazon.com, as well as other outlets. The author is donating \$1 of each sale to fight multiple sclerosis. Bruning is the former director of the LSSU Regional Center in Alpena. Find out more at misadventuresandfishingtales@yahoo.com, or visit lssu.edu/alumni.

Stephen P. Sowulewsk '97, Glen Allen, Va. is teaching at Virginia Commonwealth University. As part of his job in 2009 he designed "Australian Approaches to Health," a course to engage students in a cultural and structured academic experience in Perth, Western Australia, and Sydney. Students were affiliated with VCU's partner institution, Curtin University in Perth. They attended lectures and activities related to Australian sport, learned the latest techniques in physiotherapy by working alongside physiotherapists, attended training sessions with the Western Australia Football League, spent time with orthopedic surgeons observing surgery, getting acupuncture, and touring the Western Australian Institute of Sport. Students also had a chance to immerse themselves in the Aboriginal culture with sessions on the plight of the Aborigine. They spent the last three days in Sydney and the Blue Mountains.

Math professor starts scholarship for Emmet County students



EMMET COUNTY SCHOLARSHIP-LSSU math professor Sherry Duesing signs paperwork with LSSU President Tony McLain that establishes a scholarship in her mother's memory. Looking on are LSSU Foundation Executive Director Tom Coates and Director of Constituent Relations Sharon Dorrity.

An LSSU mathematics professor has endowed a scholarship in her mother's memory for Emmet County students continuing their education at LSSU.

Prof. Sherilyn Duesing created the Crystal L. Housding Memorial Scholarship in honor of Housding, a lifelong resident of Alanson who worked in the Littlefield Public Schools. She died in May 2009.

Her daughter described her as a very independent and resourceful woman who also understood that many students require financial assistance in order to pursue their dream of a college education.

The scholarship is open to any Emmet County high school graduate who has at least 26 LSSU credits and a minimum GPA of 3.0. Preference will be given to students who demonstrate volunteer involvement and leadership skills.



Crystal L. Housding

any one of the more than 100 scholarships and awards available at LSSU, call the LSSU Foundation at 906-635-2665 or visit our website at www.lssu.edu/foundation.

Hinshaw moves to LSSU

Trevor Hinshaw, former Muskegon Catholic Central High School boys' basketball coach, athletic director and dean of students, has accepted an assistant coach position with the LSSU men's basketball coaching staff.

A high school basketball coach since 2002, Hinshaw replaces Tom Farmer, who left LSSU to pursue other opportunities. He was 50-37 during four seasons at MCCHS. His 2007-08 team finished 17-7 for the school's best record since 1954. He also served as a head girls' varsity basketball coach at Orchard View High School in Muskegon and held assistant positions at Mona Shores and Fruitport.

"It's an opportunity to pursue a lifelong dream," Hinshaw told the Muskegon Chronicle of his move to LSSU. "But there's also a certain level of sadness because MCC has been great. Steve has turned around three college programs, so he has a really good name in coaching. I'm going to be like a sponge up there and soak up everything I can from him."

Hinshaw played two collegiate seasons at Madonna University, where his teammates voted him most-improved player as a freshman and "Mr. Hustle" as a sophomore. He received his undergradu-



Trevor Hinshaw

ate degree from Grand Valley State University.

Hinshaw is proficient in video editing and brings a unique perspective because of his administrative experience.

"He comes to us very highly recommended and has some different ideas that can always help us down the road, such as with fund-raising and managing different sports," Hettinga said. "He is very mild-mannered, which is different from me. He knows the west side of the state, which is a tough area for us to recruit because of all the great programs in the Grand Rapids area. Maybe we can steal a player or two from there."

Fosdick joins Lady Lakers

Jenna Fosdick of Lincoln, Nebraska, is the graduate assistant coach for the LSSU women's basketball team.

She was a four-year starter at the University of Northern Colorado, where she earned All-Independent honorable mention. After earning an undergraduate degree in 2007, she worked as a sales representative for Wright Medical for two years. She is currently working on a master's degree in education.



Jenna Fosdick



Becky (Murray) Arbic '00, Pickford, teaches math and psychology at Sault Area High School. Becky and her husband, Clare, are the proud parents of two children.

Joe Dankert '07, Kincheloe, teaches special education classes at Sault Area Middle School. He is currently working toward a second degree from Northern Michigan University. Joe is married and has one son.

Dan Dorn, att. 2000, Traverse City, is the vice president of engineering at OptiTemp, a company in Traverse City that designs and manufactures state of the art heat transfer solutions. Dan is the co-inventor of OptiTemp's primary patent, which has established the company as a leader in the heat transfer industry for plastics, medical, military and industrial applications.

Laura (Kennedy) Douglas '09, Colorado Springs, is working in administration for EMC Corporation in Colorado Springs.

Anglea (Loudenslager) Ellis '05, Sault Ste. Marie, is the Native American student advisor at Sault Area High School and Malcolm High School. Anglea and her husband, Dan, are the proud parents of four children.

Nancy Barr '00, Hancock, is a technical communications and senior design administrative associate for the Mechanical Engineering-Engineering Mechanics Department at Michigan Technological University.

Philip Ellison '04, Portage, was named editor-in-chief of the Journal of Business & Securities Law for the 2009-10 academic year at Michigan State University's College of Law. Ellison, a second-year law student, will be responsible for overseeing all journal activities.

Tammy (Goff) Hazley '01, Sault Ste. Marie, was selected as Helpful Teacher of the Month for September 2009 from Sault Area Middle School. She is a resource room teacher at Soo Township Elementary School. Fall 2009 marked her 11th year with Sault Schools. She is currently pursuing an education specialist degree from Northern Michigan University.



Justin Hester '08, Auburn Hills, is a robotics software engineer for Acme Manufacturing.

Aaron Hoffmann '08, Portage, is a test engineer for Stryker Medical.

Holly (Julian) Johnson '00, Tripoli, Iowa, is the director of Alumni and Development for Upper Iowa University in Fayette, Iowa. Husband Michael is the chief of police for Tripoli. Holly and Mike have two children, Zachary, 10 and Maguire, 7.

Ruthanne (Smart) Kersten '04, Sault Ste. Marie, is an early childhood special education teacher for the Sault Area Public Schools. Ruthanne and her husband, Matthew, are the proud parents of a one-year-old son.

Jason Krebill '00, Kentwood, works as a biologist for the U.S. Fish and Wildlife Service. He is beginning work to combat sea lamprey with pesticide treatments in Michigan waters.

Jesse Leiphart '07, Green Bay, has joined Berners-Schober Associates Inc. as a fire protection designer. His responsibilities will involve mechanical work in both health care and commercial sectors.

Katie Morgan '09, Luther, works in the Energy Reliability Division in the Energy Efficiency Section for the State of Michigan. Her section focuses on regulating utility companies in the state. They are currently implementing energy optimization measures for these utilities.

Adam Nightingale '02, Faribault, Minn., is the head coach of the Shattuck hockey team, a prep-school team based in Faribault.

Jade Olds '09, Genoa, Wisc., is doing on-air reporting for WKBT News Channel 8, a CBS affiliate in Milwaukee.

Michelle Owen '02, Valparaiso, Ind., holds a master's degree in community counseling and is currently a licensed mental health counselor at the Swanson Center in LaPorte, Ind.

Hockey greats Dowd and Weight to be inducted into LSSU Athletics Hall of Fame

The LSSU Athletics Hall of Fame selection committee is pleased to announce that plans are being finalized for inducting two powerhouse Laker hockey players into our Hall of Fame this summer.

The committee has been in contact with National Hockey League standouts Jim Dowd '91 and Doug Weight '91, and both of them are planning to make the trip to LSSU the weekend of June 26 for the induction, which will be held in conjunction with the Soo Blue-liner Golf Tournament on Saturday, June 26. The golf tournament will begin in the morning at the Soo Country Club, and the Hall of Fame banquet will follow that evening at the Cisler Center. The Blueliner Golf Tournament raises funds for Laker hockey.

"Both of these two players are hockey legends at Lake State," said Susan Fitzpatrick '87, director of the LSSU Alumni Office, which sponsors the Hall of Fame. "They were elected to the Hall of Fame several years ago, but since our inductions normally happen in October, they've been unable to attend in the fall because of the timing of the NHL schedule. We planned this summer event to accommodate their busy schedules, and we are really excited about the opportunity to have both of them back on campus together."

Fitzpatrick advises checking the LSSU website, particularly the alumni webpage, for updates regarding this event, including information about reserving a spot at the induction banquet.

Dowd graduated from LSSU in 1994 with a bachelor's degree in recreation management. While a student athlete, he scored 91 goals and made 183 assists for 274 career

points and earned many awards, including:

- LSSU most-valuable player and most-valuable forward in 1990 and 1991
- NCAA First-Team All-America in 1991
- NCAA Second-Team All-America in 1990
- Hobey Baker Award finalist in 1991
- All-CCHA First Team and CCHA Player of the Year in 1991
- All-CCHA Second Team in 1990

He is LSSU's leader in: career points, single-season points with 92 in 1989-1990, CCHA career points (61-121-182), CCHA single-season points with 59 in 1989-1990, career assists, single-season assists, CCHA career assists (121) and CCHA single-season assists with 43 in 1989-1990.

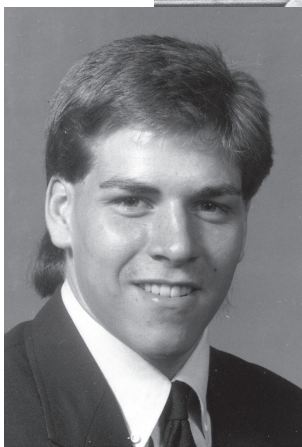
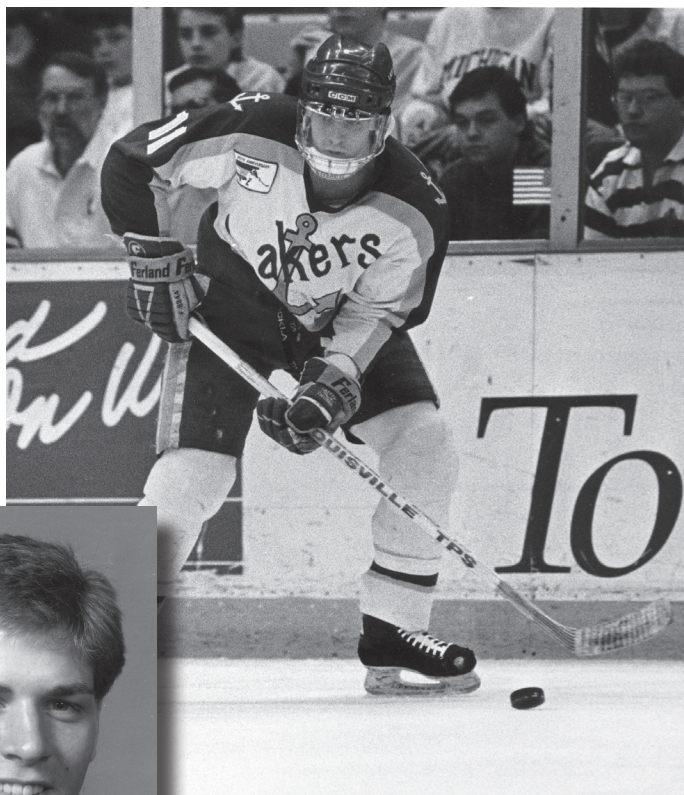
Dowd started his professional career in the 1991-1992 season, playing 28 games with the New Jersey Devils until the 1995-1996 season, and then heading to the Vancouver Canucks where he finished that season. In all, Dowd played 17 years of professional hockey, ending his career while playing for the Philadelphia Flyers in 2007-2008. He played for 16 different professional teams in his career, winning a Stanley Cup in 1995 with the Devils. He totaled 728 games in the NHL, with a record of 71-168 -- 239.

Weight played for LSSU from 1989-1991 before moving on to the

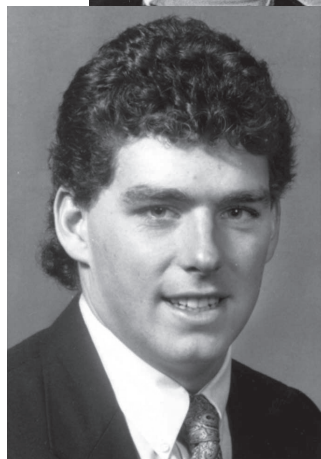
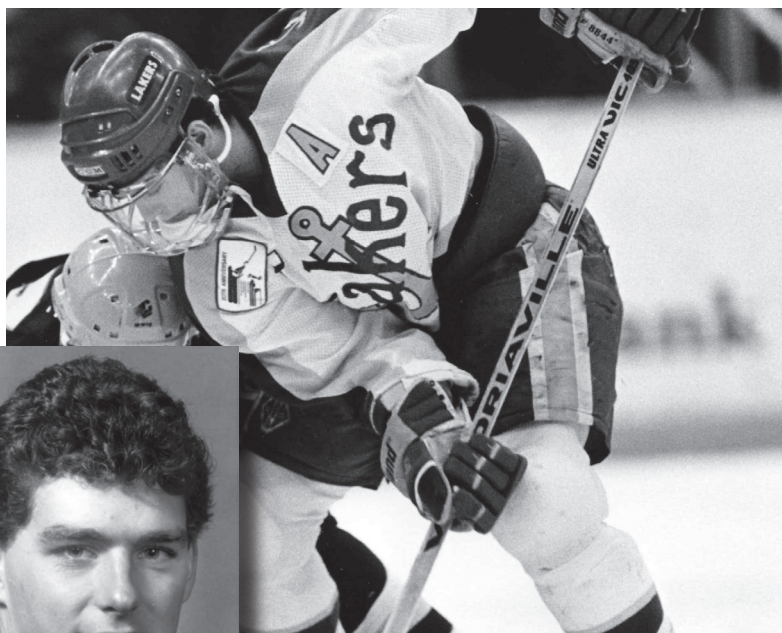
NHL. During his first season as a Laker, he was the highest-scoring freshman in the nation with 21-48-69 and he totaled 29-46--75 with a school-record 10 game-winning goals in 1990-1991, helping to lead the Lakers to the 1991 CCHA regular-season and playoff titles.

His LSSU accolades included:

- Second-team All-America in 1991
- CCHA All-Rookie Team in 1990
- CCHA First Team and CCHA All-Tournament Team in 1991
- Ranked 19th on LSSU's scoring list with 50-94-144
- Ranked third and seventh in LSSU single-season points, and third and fourth in single-season assists
- Ranked second and third in CCHA single-season assists for LSSU



Doug Weight



Jim Dowd

Weight is in his 20th season of professional hockey, starting his career in the 1990-1991 season with the New York Rangers. He is playing on his ninth professional team, the New York Islanders, and leads the team as captain. In 1,212 NHL games he has recorded 275-744 -1019.

He won his first Stanley Cup with the Carolina Hurricanes in 2006 and has played in three Olympics Games – Nagano 1998, Salt Lake City 2002 (won silver), and Torino 2006. In 1995-1996, Weight appeared in his first NHL All-Star game, and then played again in 1997-98. His last appearance with the All-Stars was in the 2000-2001 season. In 2005, Weight co-captained the United States in the World Championships. In 2004, he played for the U.S. in the World Cup of Hockey and in 1996 won the World Cup of Hockey for the U.S.



Heather Seites '04, Cadillac, works as a fisheries management biologist in the Central Lake Michigan Management Unit of the Department of Natural Resources and Environmental Quality in Cadillac.

Derek A. Smith att. '04-'07, Plainfield, Ont., signed a one-year contract with the Ottawa Senators. During his last season at LSSU, he scored 10 goals and had 20 assists, and was named an All-CCHA defenseman.

Daniel Sumner '09, Sault Ste. Marie, has accepted a position in the highly competitive Merchant Leadership Program at Wal-Mart Stores, Inc., Bentonville, Ark. Dan relocated to northwestern Arkansas to begin his duties in January.

Rebecca Remondini '08, Sault Ste. Marie, works at Anderson Tackman PLC as a staff accountant/auditor.

Evan Russell Williams '08, Downton, England, is currently teaching high school math at the Trafalgar School at Downton.

Joined hands

Amanda Cardinal '05, Davison, married **Ben Eles '05**, Walled Lake, on Sept. 5, 2009.

Britnee Ellis '04 married Raymond Gillett on May 2, 2009 at St. Joseph's Church. The couple lives in Sault Ste. Marie.

Tricia Faust '05 married Adam Farner on Aug. 8, 2009 in Elizabethtown, Penn. The couple lives in Halifax, Penn.

Chantelle Gorham '97 married David Kurtis on Feb. 22, 2009 in Ft. Lauderdale, Fla. The couple lives in Levack, Ont.

Laura Kennedy '09 married Jordan Douglas on Aug. 8, 2009 at the First Baptist Church in Sault Ste. Marie. The couple lives in Colorado Springs.

Matthew Merian '07 and **Katie Baker '06** were married July 4, 2009. The couple lives in Shelby Township.

Esther Morgan '05 and **Justin Proulx att. '02-'04**, Sault Ste. Marie, were married on Sept. 23, 2006 at Calvary Baptist Church in Sault Ste. Marie.

Danielle Norton '04 married Rob Hendrick at St. Joseph's Catholic Church in Sault Ste. Marie. The couple lives in Farmington Hills.

Anthony Palumbo '89, Traverse City, married June Merrick on Aug. 10, 2009 in Napa Valley.

Holly Roe '01 married **Lt. Alek Willson '05**, Sault Ste. Marie, on Dec. 30, 2008 in Ocho Rios, Jamaica.

Karen Stinson '06 married Edwin Miller on Sept. 22, 2007 in Mt. Morris. The couple lives in Lansing.

Lacey Taylor '06 and **Matthew Kane '05** were married on Oct. 11, 2008. The couple lives in Monroe.

Abigail Tucker '01, Fort Wayne, Ind., married Justin Davis of Charlevoix on Nov. 14, 2009 in Fort Wayne.

Derek Tyler '00 married Jennifer Glassley on Aug. 29, 2009 at St. Joseph's Catholic Church in Sault Ste. Marie. The couple lives in St. Joseph.

Victoria Wiggins '89, Petoskey, married Kent Weiderman on March 16, 2009 on the beach in Key West, Fla.



Pink in the rink

As of January, the Chippewa County Community Foundation was still receiving contributions for LSSU's 2009 Pink in the Rink event, which was held Oct. 23-24 in conjunction with the hockey series between Lake State and Ohio State.

The Lakers wore custom-made pink jerseys during the Saturday contest. Instead of names on the back, "Hockey Cares" adorned each jersey, which were sold during a silent auction.

The first 1,000 fans who attended each night received free Mardi gras pink beads and "Believe in Pink" placards. The first 250 fans who showed up Saturday received goody bags that

included one free chance to win gift baskets donated by local vendors. Tickets to win the gift baskets, along with T-shirts and other pink treats, were sold throughout the weekend.

"It would be safe to say we met last year's total, which was approximately \$12,000.00, but we think we may have surpassed that by a bit," said Danna Sanderson, Pink in the Rink committee chairman. "We feel it was another very successful event. The turnout was huge, even better than the previous year, and the hockey was great."

"We really learned this year that we need help in order to keep doing this event, and we are actively seeking

volunteers for next year. Also, we were down quite a bit in our business sponsorships, although this might be related to our limited manpower, which led to limits in our ability to let people know we were looking for donations. But, we have thousands of dollars to distribute to the community in the near future, so overall I'd call Pink in the Rink 2009 a big success."

All money raised during Pink in the Rink will be donated to local women's health organizations. The LSSU women's basketball and volleyball teams also held "Pink" events during their seasons as part of the "GLIAC Pink Wave" sponsored by the Great Lakes Intercollegiate Athletic Conference.

Buoys and Gulls

Lisa (Roznowski) Anderson

'98, Lachine, and husband Jim are the parents of Colton James, born June 26, 2009.

Andrew and A'anna (Rizkallah)

Carncross, Wayne, are the parents of Riley Ilene, born Nov. 14, 2009.

Lance Cashler '93, Fruitport, and wife Tanya are the parents of Jenna Grace, born July 11, 2009. She joins brother Ryan and sisters Lauren and Carley.

Bryan '01 and Alicea (Siess)

Coullard '00, Pickford, are the parents of Alyvia Mae, born July 14, 2009. She has a sister, Adelyn Mary.

Lynnette Utecht '93, Halton, and Jeff Eding are the parents of Nathan Jeffrey, born Sept. 21, 2009.

Kelli Fazzari '01 and husband Steve, Sault Ste. Marie, are parents of Orran Kenneth Edward, born July 28, 2009. He joins brother Emmett and sister Annabelle.

Jae (Wieland) Fischer '03 Charlevoix, and husband Ryan are the parents of Brooklyn Isabel, born Aug. 6, 2009.

Chantelle Gorham '97 Onaping, Ont. and David Kurtis are the parents of Ella Grace, born July 14, 2009.

Daraka (McCoy) '03 and Matthew Hudecek, Sault Ste. Marie, are the parents of twins Emmy Lee and Joseph Matthew, born April 6, 2009. They join sister Finley Kathleen.

Charles Karpowicz '96, Seattle, and wife Jennifer Joy are the proud parents of daughter Amber Rose, born July 11, 2009.

Mindy (Killips) Kavanaugh '06 and husband Mark, Sault Ste. Marie, are the parents of Mackinley Christopher, born June 29, 2009.

Wesley Klier '96 and wife Bridget, Sault Ste. Marie, are the parents of Hannah Nao, born Nov. 30, 2009.



Chelsea (Friedt) Leone '95, Buffalo, NY, and husband Paul are the proud parents of Paige Gabrielle, born Nov. 3, 2008. She has a two-year-old sister, Reese.

Tyler Palmer '00 and wife Jae, Rockford, are the parents of Ellen (Ellie) Vivienne, born June 24, 2009.

Lydia Petkus '07, Sault Ste Marie, and Keith McDonald are the parents of Kirsikka Anna Josephine, born Oct. 27, 2009.

Denise (Diedrick) '95 and Dan Poupore '96, Carney, are the proud parents of Addison Dawn, born Jan. 18, 2009. Sister Ariel is 5.

Matt Powrozek '97 and Carolyn (McCullough) '00, Ferndale, are the parents of Vannessa Raye, born Oct. 27, 2009. Trevor, 4, is a terrific big brother to his sister.

Stacy (Brabant) Prachar '00, Sterling Heights, and husband Dan are the parents of Cassidy Elaine, born Sept. 29, 2008.

Esther (Morgan) '05 and Justin Proulx att. '02-'04, Sault Ste. Marie, are the parents of Elise Rachel, born Jan. 27, 2008.

Christy Roberts '04 and Toby Mitchell, Brimley, are the parents of Jacob Scott, born May 12, 2009. He has a brother, Nicholas.

Holly (Roe) '01, and Lt. Alek Willson '05, Sault Ste Marie, are the parents of Dane Marshall, born Aug. 19, 2009.

Sarah Shadnaw '03 and Matthew White, Sault Ste. Marie, are parents of Chase Matthew, born May 20, 2009.

Mark '01 and Simone (Sabourin) Shetler '01, Brighton, are the parents of Brenden Earl, born Dec. 7, 2009.

Ken Smith '96 and wife Cristi (Cryderman) '97, Sault Ste. Marie, are the parents of twin daughters, Makenna Chad and Brylee Alivia, born March 28, 2009. They have one brother, Cason Christopher, who is 4.

Lindsey Pung-Terry '01 and Scott Terry '02, Berkley, are the proud parents of son Kendon Lucas, born April 20, 2009.

Adam Truckey '06, Central Lake, and wife Briana are the parents of Jackson, born Oct. 7, 2009.

Shelly (Brandt) Wagner '94, Ballwin, Missouri, and husband Zach are the parents of Lincoln James, born Oct. 6, 2009. He joins two brothers, Henry Ross and Brandt Logan.

Angela (Pavwoski) Young '95, Pinckney, and husband Chris are the parents of a daughter, Faith Addison, born Nov. 15, 2009.

Friends we'll miss

Bobbie Lee Bentley '78, Sault Ste. Marie, died Aug. 22, 2009.

Robert Bourque '70, Sault Ste. Marie, died Aug. 6, 2009 after a long battle with cancer.

Donald Gene Bradley '63, Kincheloe, died Dec. 27, 2009. He was 57.

Patrick "Mike" Corbett, att. '00-02, Covington, died July 25, 2009. He was 58.

Frances Cunnyingham '59, Spokane, Mo., died March 18, 2006. She was 64

John DeMolen '56, Sault Ste. Marie, died Oct. 7, 2009.

Frederick C. Eaton '50, Kewadin, died July 21, 2009.

Robert Fowler '53, Sault Ste. Marie, died Sept. 6, 2009. He was 76.

Carl E. Griffin '70, Prattville, Alabama., died April 18, 2009.

Jerome "Jerry" Ignatowski, att. '72-'74, Sault Ste. Marie, died Oct. 7, 2009. He was 55 and an avid outdoorsman who enjoyed windsurfing, snowboarding, backpacking, and fishing.

Henry Jacques '60, Canton, died Oct. 10, 2009. He was 67.

Daniel Kobes '99, Sault Ste. Marie, died Nov. 19, 2009. He was a member of the Sault Wesleyan Church where he was on the administrative board. He also taught Sunday School and was very active with Guatemala Missions.

Lyle Lawrence '71, Sault Ste. Marie, died Nov. 4, 2009. He loved being outdoors and hunting and fishing.

Lila Malmborg '61, Marion, died in an automobile accident on Dec. 11, 2009. She was retired from the Sault Area Public Schools and employed at LSSU as the director for compliance for LSSU charter schools. She was 67.

Matthew Malty '07 Milford, died May 23, 2009. He was diagnosed with cancer three months after graduating from LSSU.

Roland W. Menominee Jr. att '80-'82, Bay Mills, died unexpectedly Nov. 19, 2009 at War Memorial Hospital. He was 48. Roland was the director of the Bay Mills Laundry Department and an avid fisherman and hunter.

Sheila Mullin '88, East Lansing, died Sept. 7, 2009 after a battle with leukemia. She formerly taught at LSSU.

Troy O'Brien '87, Lansing, died Sept. 6, 2009. He was originally from Sault Ste. Marie.

John Tebby '72, West Yellowstone, Mont., died March 20, 2007 after a battle with cancer.

John Toolan '65, formerly of Sault Ste. Marie, died Aug. 8, 2009.

Mary P. Wood, Sault Ste. Marie, died May 21, 2009 at Henry Ford Hospital. Mary worked in the music department at LSSU and gave private voice and piano lessons. She was a member of LSSU Elders and the longtime director of the Mary Wood Chorus.

Donald A. Young '75, Cadillac, died Nov. 18, 2009. He was 58. He had recently become a full-time truck driver program coordinator at Baker College. He enjoyed family and loved to hunt and spend time with his grandchildren.

Vernie Knudson, LSSU Prof. Emeritus, died Jan. 9 in Baldwin, Kansas. He was 77. The Olsburg, Kansas native came to LSSU in 1971 to direct the college's new resource management technology program, later known as natural resources technology (NRT). He was also instrumental in the development of the water quality technology curriculum, devising and teaching a number of the water-related courses for two- and four-year programs. He coordinated the internships for the programs' students with local, state and federal agencies, retiring in 1997.

Jack L. Gingrass, 88, former member of the LSSU Board of Trustees, died Jan. 23 in Iron Mountain. He served on the LSSU board from 1985 to 1992, resigning to take a position with the Michigan Transportation Commission. He served as state representative for the 109th district for 14 years, on the Iron Mountain City Council for several years and was mayor for the city of Iron Mountain for eight years.

Messages in a Bottle

To LSSU Alumni Director Susan (Frohman) Fitzpatrick '87,

Thank you so much for your welcome in September when Dennis and I stopped in to the Alumni House. Dennis is still in shock that you recognized him from his cross-country days!

We walked around campus all morning and had such a warm welcome from everyone we met. Barb Evans in the Biology Dept. was most congenial. Pat in the Norris Center walked us right up to the showcase to help us find Dennis' MVP Award and his Kiwanis "Smarty-Pants Award from '85. She also introduced Dennis to the new cross country coach, who was also very friendly.

Our highlight was meeting Roger Greil at the Aquatic Research Laboratory. We hit it off immediately and he invited us to go out on the St. Mary's River with him to check a fish trap set in the rapids.

We had such a fabulous time with him out on the river. We have a new lifetime friend, I'm sure. He is such a happy, energetic, fun person, and was so excited to show us what is going on at the ARL. A fish and wildlife student, Tiffany, was also along for the trip. We enjoyed her company and it was fun for me to talk with her about her major, as it was the same as mine.

We could never expect to receive this warm and friendly welcome from a larger university, I'm sure. We had a tremendously fun week in the Soo and I know that we will be back.

Thank you, again, for your hospitality and warm welcome.

**Lori (Chartier) and Dennis Kutz '83
Port Huron**

To Prof. John Erkkila, retired LSSU business professor:

I hope all is going well, and that you are "maximizing utility" in your retirement.

Graduate school is challenging, but I am doing well at this point, and am confident that I will succeed in the long run. LSSU prepared me well for this.

I know I have said this before, but thank you for all you have done to help me attain my goals, including your excellent classes, guidance and support relative to the Central Savings Bank Scholarship, recommendation letter, and willingness to offer your advice and opinion.

I sincerely appreciate your efforts, and will always remember these things. You are an excellent educator and individual, and LSSU will not be the same without you.

**Paul Byrnes '89 and '09
Sault Ste. Marie, Mich.**

From the blog of radio personality James Rabe on the late Ronald "Bud" Cooper:

I had a pretty blessed childhood. With a father in the LSSU PR business and all the screwy events he invented like World Sauntering Day and the Stone Skipping Contest, it's not a surprise that I had the opportunity to meet a wide variety of adults. What may be a surprise is that most of them were nice to me. Kind, even.

I'm thinking about this because today my brother Karl sent me an e-mail to let me know Bud Cooper passed away.

Ronald "Bud" Cooper, the man who proudly carried LSSU's banner for a lifetime, died Nov. 29. He was 80.

Bud, a former student-athlete, coach and director of athletics, was LSSU's most well-known, steadfast, approachable, beloved figure from the time the school opened its doors in 1946. As his role with the university ebbed and flowed, his loyalty never wavered. He left behind a legacy of commitment and excellence that his successors will forever strive to reach.

I never got to know him all that well, but every time he and his wife, Muriel, joined our family for something, I was a happy kid. Reading the Lake State obituary, I found myself nodding in agreement. He was a good man and he made a difference in the lives of many people, which sounds like a pretty good goal for the rest of us.

When I pass away, it won't matter if I was a successful radio guy or if I won more arguments than I lost. What will matter is if I made a difference and if I was kind.

James Rabe
<http://jamesrabe.com/blog/>

First female detective in Muskegon Co is a Laker

*From the Muskegon Chronicle
Published with permission.*

Move over, men. The first-ever female detective has been appointed to the Muskegon County Sheriff's Office.

Deputy Lisa Freres, a 31-year-old mother of two, was appointed to the position in fall 2009.

She's earned the title, says Sheriff Dean Roesler.

"She has a very strong work ethic," the sheriff said. "She is self-motivated and showed some genuine interest when the position became open. With her personality, she will be able to establish some relationships which will help her with her duties as a detective."

Freres was the only female in a pool of six candidates vying for the detective position, Roesler said.

Originally from Gaylord, the former Lisa Morris graduated with a criminal justice degree from LSSU in 2000. She was hired as a police officer with the Grand Rapids Police Department and in 2001 was hired by MCSO.

As a road patrol deputy, Freres answered calls for service, dealt with traffic issues, responded to complaints from citizens and performed traffic enforcement. As a detective, she will be following up on reports taken by patrol deputies, she said.



KEEPING THE BUGS OUT – Beth Hronek, LSSU's public services librarian, got away – far away -- from the Shouldice Library over the summer. That's her in full bug suit posing with her Laker Log while making camp along the Eagle River on a three-week canoe trip in the Arctic Circle. Hronek canoed the Eagle, Bell, Porcupine and Yukon rivers, and said the bug suit was beneficial during the first week of the trip.



LAKER MASCOTS – LSSU President Tony McLain, far right, joins LSSU students and staffers, and a few lucky kids from the crowd, for an on-ice 10th birthday celebration of Lake State's mascots on Jan 22. Foghorn the Sailor was created in 2000, while Seamore the Sea Duck, who's been around for decades, merely got a redesign. Fans signed an oversized card and shared a giant cake to mark the occasion between periods when Notre Dame came to Taffy Abel Arena for a hockey game.

2010 Alumni Calendar of Events

*These events are hosted, sponsored or directly affiliated with LSSU
Additional events or revisions at www.lssu.edu/calendar*

March 19	Snowman Burns	Noon	Outside Cisler Center
April 10	Senior Sendoff	4-6 p.m.	Moloney's Alley
April 30	Golden Grad Reunion Reception	7-9 p.m.	Lukenda Alumni House
May 1	LSSU Commencement	11 a.m.	Taffy Abel Arena
June 11-13	Lake State Classic Golf tournament	All Weekend	Gaylord
June 26	Soo Blueliner Golf Tournament	9 a.m.	Soo Country Club
June 26	Athletic Hall of Fame Induction <i>Doug Weight, Jim Dowd</i>	5 p.m.	Cisler Center
July 16-18	Alumni Group Outing at Traverse City Beach Burns	7 p.m.	Wuewrfel Park, Traverse City
July 24	Math/Computer Science Reunion	TBA	LSSU Campus
August 13-15	LSSU Camping Weekend	All Weekend	Hartwick Pines State Park
August 28	LSSU Hall of Fame Golf Outing (<i>tentative</i>)	Noon	The Oaks, Kincheloe
September 10	Ronald "Bud" Cooper Memorial	6 p.m.	Cooper Gym
September 11	LSSU Golf Social/Remember Bud	11 a.m.	Soo Country Club
September 18	President's Diner - by invitation only (<i>Major donors who contribute \$1,000 or more annually or \$10,000+ lifetime</i>)	6 p.m.	Cisler Center
October 8-9	Great Lake State Weekend 2010		LSSU Campus
October 8	Alumni Awards Banquet	5 p.m.	Cisler Center
October 8	Laker hockey vs. Univ of Minn-Duluth	7 p.m.	Taffy Abel Arena
October 8	Scholarship Donor Recognition Brunch	11 a.m.	Cisler Center
October 9	Alumni Tailgate Party	5 p.m.	Lukenda Alumni House
October 9	Laker hockey vs. Michigan Tech	7 p.m.	Taffy Abel Arena
November 26-27	Laker hockey at Denver Cup Alumni social		University of Denver Denver, CO



Lake State After Hours is a gathering of Laker alumni, employees and friends on the first Thursday of every month at 5 p.m., at a variety of local establishments. Come join us!
Laker Fridays are every Friday - wear your blue and gold, wherever you are!

For information about these and other events, contact Alumni Director Susan Fitzpatrick at alumnirelations@lssu.edu or call 906-635-6219.

NOTE: If this magazine is addressed to your son, daughter or other relative who no longer lives at your home, please notify Alumni Relations of the correct address.
Call 906-635-2831 or e-mail us at alumnirelations@lssu.edu.

Office of Alumni Relations
Lake Superior State University
650 W. Easterday Avenue
Sault Ste. Marie, MI 49783

CHANGE SERVICE REQUESTED

Remember your days on campus with Prof. Maureen Mousley's "Historic East Gate."



Commissioned by alumnus Kevin Cooper '79, the painting depicts the former Fort Brady gate on the east end of campus at Ryan Street. Mousley used our unique northern spectrum of color and light in order to capture a sense of place and the freshness of a late winter-early spring day that is typical of our region and the upper Midwest.

UC Santa Barbara-trained artist Mousley is active with the local Sault Area Arts council and currently serves as president of the Olive Craig Gallery Board. She taught in local schools prior to her position as an adjunct art instructor with LSSU. Her works have garnered awards at juried art shows throughout the region.

Historic East Gate prints are being sold to raise funds for the Theatre and Performance Fund held by the LSSU Foundation. Established in 2003, the fund allows students to travel and perform at regional and national festivals and conferences. Since its inception, the fund has helped students perform in Georgia, Arkansas, Texas, Minnesota, Illinois and Michigan.

Non-matted \$50
Matted \$75
Matted/framed \$100
Shipping \$25

Contact
LSSU Foundation at
906-635-2665 or
foundation@lssu.edu